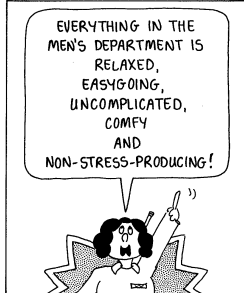


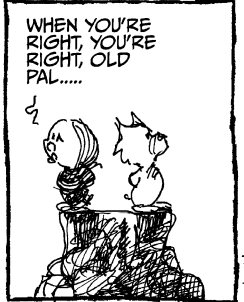
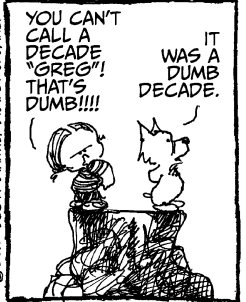
JACK ELROD



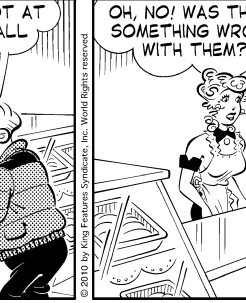
CATHY GUISEWITE



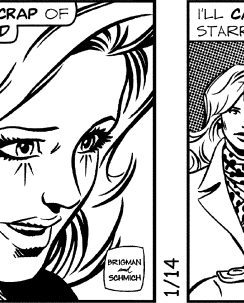
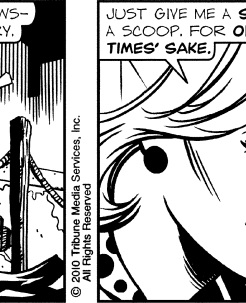
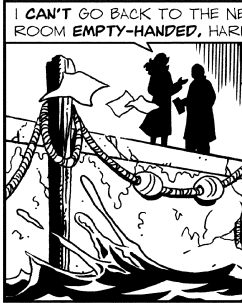
DARRIN BELL



SCOTT STANTIS



DEAN YOUNG



JUNE BRIGMAN & MARY SCHMICH

SCRABBLE GRAMS

A₁ A₁ I₁ L₁ R₁ T₁ P₃

 A₁ A₁ I₁ R₁ W₄ N₁ T₁

 A₁ E₁ U₁ T₁ P₃ N₁ K₅

 E₁ O₁ O₁ Y₄ J₈ R₁ V₄

RACK 1

 RACK 2

 RACK 3

 RACK 4

Make a 2- to 7-letter word from the letters in each row. Add points of each word, using scoring directions at right. Finally, 7-letter words get 50-point bonus. "Blanks" used as any letter have no point value. All the words are in the Official SCRABBLE Players Dictionary, 3rd Edition.

PAR SCORE 145-155
BEST SCORE 244
FOUR RACK TOTAL
TIME LIMIT: 20 MIN

Wednesday's Scrabble grams Par score: 195-205 pts. Total: 255 pts.
Rack 1: FACTUAL, 62 points
Rack 2: GRAMMAR, 64 points
Rack 3: VANTAGE, 72 points
Rack 4: LATERAL, 57 points

©2010 Hasbro. Distributed by Tribune Media Services, Inc. All rights reserved

CRYPTOQUIP

©2010 by King Features Syndicate, Inc.

Wednesday's Cryptoquip: IF FIXING THINGS UP MAKES YOU EXTREMELY NERVOUS, YOU LIKELY ARE HAVING REPARATION ANXIETY.

XKMSIY ZXNR QV IY IXXMBTIOTMY
 MD XBTNYOTXOX LCM IFN XOZRVTY5

TBNQNF5X: "SM LT0C OCN DKMN."

The Cryptoquip is a substitution cipher in which one letter stands for another. If you think that X equals O, it will equal O throughout the puzzle. Single letters, short words and words using an apostrophe give you clues to locating vowels. Solution is by trial and error.

Today's Cryptoquip Clue: S equals G

SUDOKU

Wednesday's Solution

Sudoku is like a crossword puzzle, but uses numbers instead of words. The puzzle is a box of 81 squares, subdivided into 3x3 cubes of 9 squares each. Some squares are filled in with numbers. The rest should be filled in by the puzzler.

Fill in the blank squares allowing the numbers 1-9 to appear only once in every row, once in every column and once in every 3x3 box.

One-star puzzles are for beginners, and the difficulty gradually increases through the week to a very challenging six-star puzzle.

6	8	2	7	3	5	4	9	1
3	7	1	9	4	6	2	5	8
5	4	9	1	8	2	3	7	6
2	9	8	5	1	4	6	3	7
4	3	6	2	7	8	5	1	9
7	1	5	3	6	9	8	2	4
9	5	4	6	2	1	7	8	3
1	6	3	8	5	7	9	4	2
8	2	7	4	9	3	1	6	5

	8		1	7				5
4				3		8		
		1	8					3
4		7						
6	3					9	2	
				2		7		
8			2		4			
	1	9						7
9		3		8		1		

Difficulty level
4 star